



# 4

## HUTTON CENTRE

SOUTH COAST METRO

**SUITE 150 ±6,749 SF**



- 10 PRIVATE OFFICES
- CONFERENCE ROOM
- BREAK ROOM
- STORAGE AREA

**KURT BRUGGEMAN**  
Senior Vice President  
Lic #01264501  
949.790.3125  
kbruggeman@leeirvine.com

**MATT FRYER**  
Senior Vice President  
Lic #01333079  
949.790.3122  
mfryer@leeirvine.com

**DAVE SMITH**  
Senior Vice President  
Lic #01195186  
949.790.3134  
dsmith@leeirvine.com



The information contained herein has been obtained from the property owner or other third party and is provided to you without verification as to accuracy. We (Lee & Associates, its brokers, employees, agents, principals, officers, directors and affiliates) make no warranty or representation regarding the information, property, or transaction. You and your attorneys, advisors and consultants should conduct your own investigation of the property and transaction.

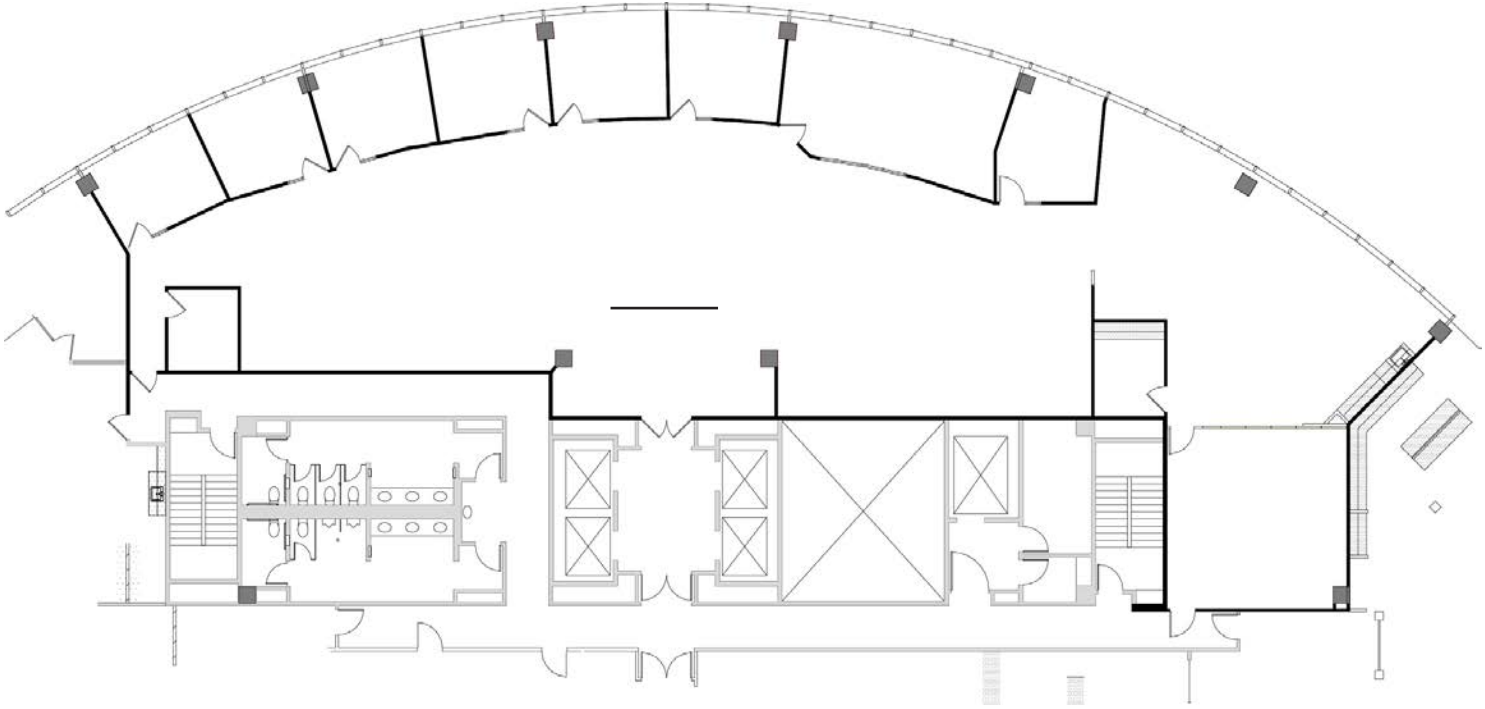


# 4

## HUTTON CENTRE

SOUTH COAST METRO

**SUITE 200 ±7,863 SF**



**7 PRIVATE OFFICES**

**CONFERENCE ROOM**

**BREAK ROOM**

**2 SERVER/STORAGE ROOMS**

**OPEN AREA**

**KURT BRUGGEMAN**  
Senior Vice President  
Lic #01264501  
949.790.3125  
kbruggeman@leeirvine.com

**MATT FRYER**  
Senior Vice President  
Lic #01333079  
949.790.3122  
mfryer@leeirvine.com

**DAVE SMITH**  
Senior Vice President  
Lic #01195186  
949.790.3134  
dsmith@leeirvine.com



The information contained herein has been obtained from the property owner or other third party and is provided to you without verification as to accuracy. We (Lee & Associates, its brokers, employees, agents, principals, officers, directors and affiliates) make no warranty or representation regarding the information, property, or transaction. You and your attorneys, advisors and consultants should conduct your own investigation of the property and transaction.

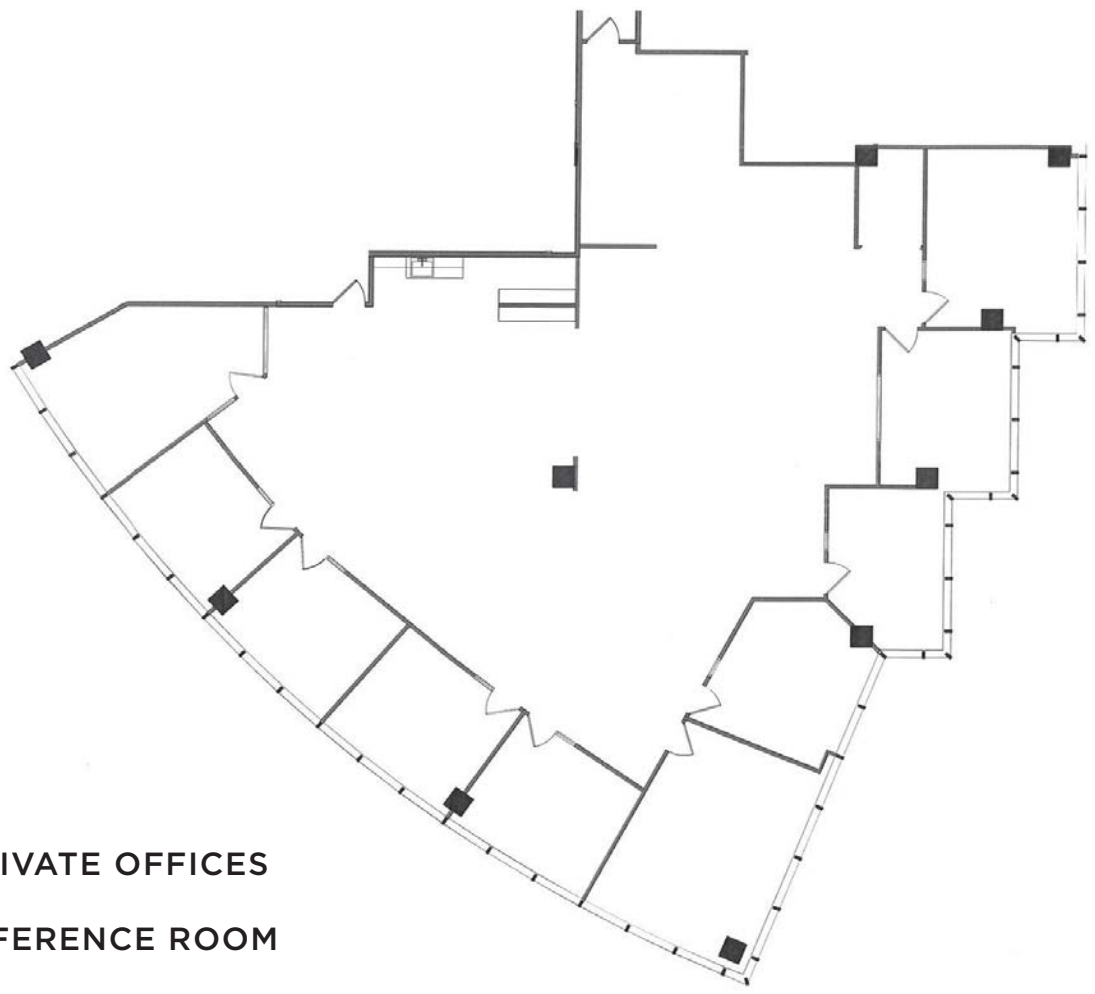


# 4

## HUTTON CENTRE

SOUTH COAST METRO

**SUITE 220 ±5,583 SF**



- 9 PRIVATE OFFICES
- CONFERENCE ROOM
- KITCHENETTE
- LARGE OPEN AREA

**KURT BRUGGEMAN**  
Senior Vice President  
Lic #01264501  
949.790.3125  
kbruggeman@leeirvine.com

**MATT FRYER**  
Senior Vice President  
Lic #01333079  
949.790.3122  
mfryer@leeirvine.com

**DAVE SMITH**  
Senior Vice President  
Lic #01195186  
949.790.3134  
dsmith@leeirvine.com



The information contained herein has been obtained from the property owner or other third party and is provided to you without verification as to accuracy. We (Lee & Associates, its brokers, employees, agents, principals, officers, directors and affiliates) make no warranty or representation regarding the information, property, or transaction. You and your attorneys, advisors and consultants should conduct your own investigation of the property and transaction.

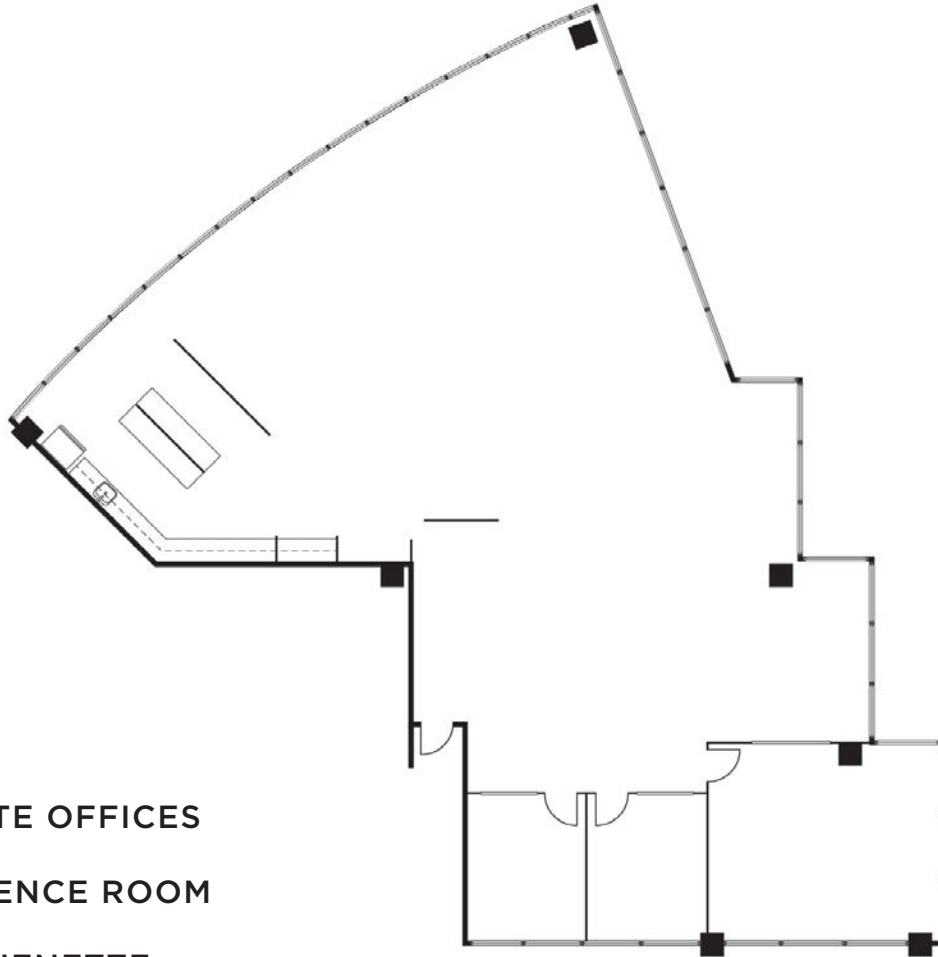


# 4

## HUTTON CENTRE

SOUTH COAST METRO

**SUITE 260 ±4,043 SF**



- 2 PRIVATE OFFICES
- CONFERENCE ROOM
- KITCHENETTE
- LARGE OPEN AREA

**KURT BRUGGEMAN**  
Senior Vice President  
Lic #01264501  
949.790.3125  
kbruggeman@leeirvine.com

**MATT FRYER**  
Senior Vice President  
Lic #01333079  
949.790.3122  
mfryer@leeirvine.com

**DAVE SMITH**  
Senior Vice President  
Lic #01195186  
949.790.3134  
dsmith@leeirvine.com



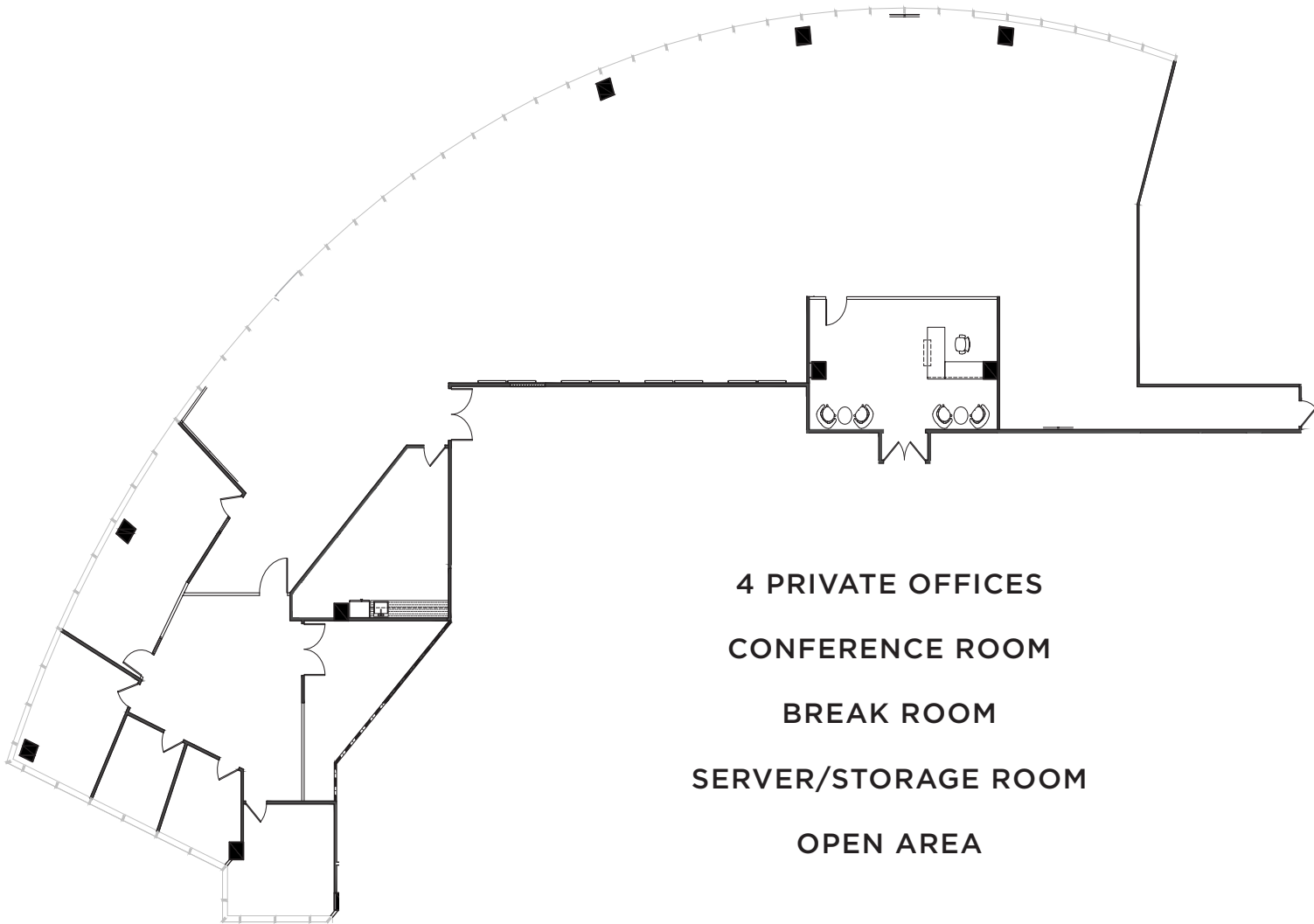


# 4

## HUTTON CENTRE

SOUTH COAST METRO

**SUITE 300 ±9,340 SF**



- 4 PRIVATE OFFICES
- CONFERENCE ROOM
- BREAK ROOM
- SERVER/STORAGE ROOM
- OPEN AREA

**KURT BRUGGEMAN**  
 Senior Vice President  
 Lic #01264501  
 949.790.3125  
 kbruggeman@leeirvine.com

**MATT FRYER**  
 Senior Vice President  
 Lic #01333079  
 949.790.3122  
 mfrayer@leeirvine.com

**DAVE SMITH**  
 Senior Vice President  
 Lic #01195186  
 949.790.3134  
 dsmith@leeirvine.com



The information contained herein has been obtained from the property owner or other third party and is provided to you without verification as to accuracy. We (Lee & Associates, its brokers, employees, agents, principals, officers, directors and affiliates) make no warranty or representation regarding the information, property, or transaction. You and your attorneys, advisors and consultants should conduct your own investigation of the property and transaction.

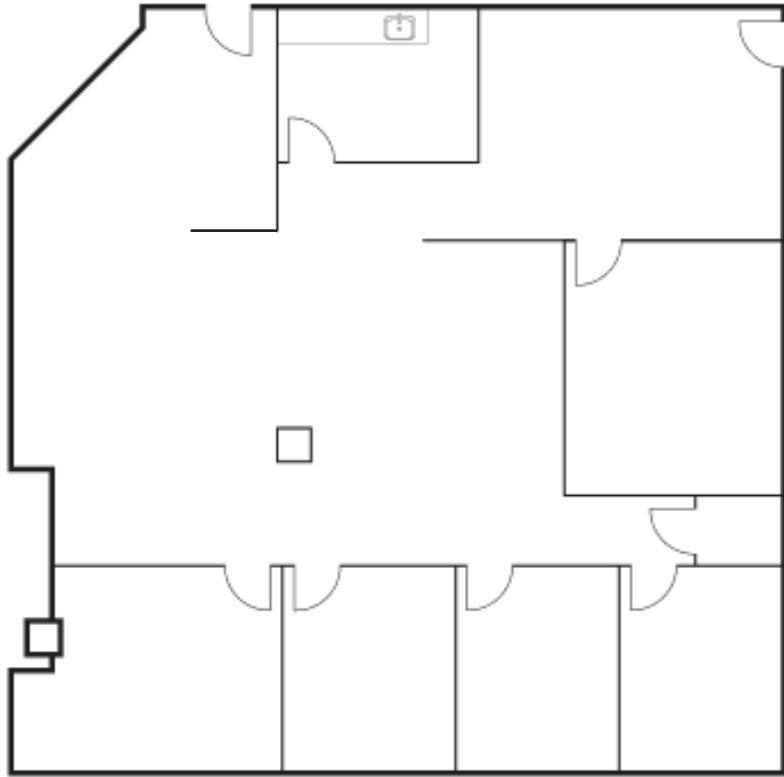


# 4

## HUTTON CENTRE

SOUTH COAST METRO

**SUITE 330 ±3,310 SF**



- 4 PRIVATE OFFICES
- CONFERENCE ROOM
- KITCHENETTE
- OPEN AREA

**KURT BRUGGEMAN**  
 Senior Vice President  
 Lic #01264501  
 949.790.3125  
 kbruggeman@leeirvine.com

**MATT FRYER**  
 Senior Vice President  
 Lic #01333079  
 949.790.3122  
 mfryer@leeirvine.com

**DAVE SMITH**  
 Senior Vice President  
 Lic #01195186  
 949.790.3134  
 dsmith@leeirvine.com



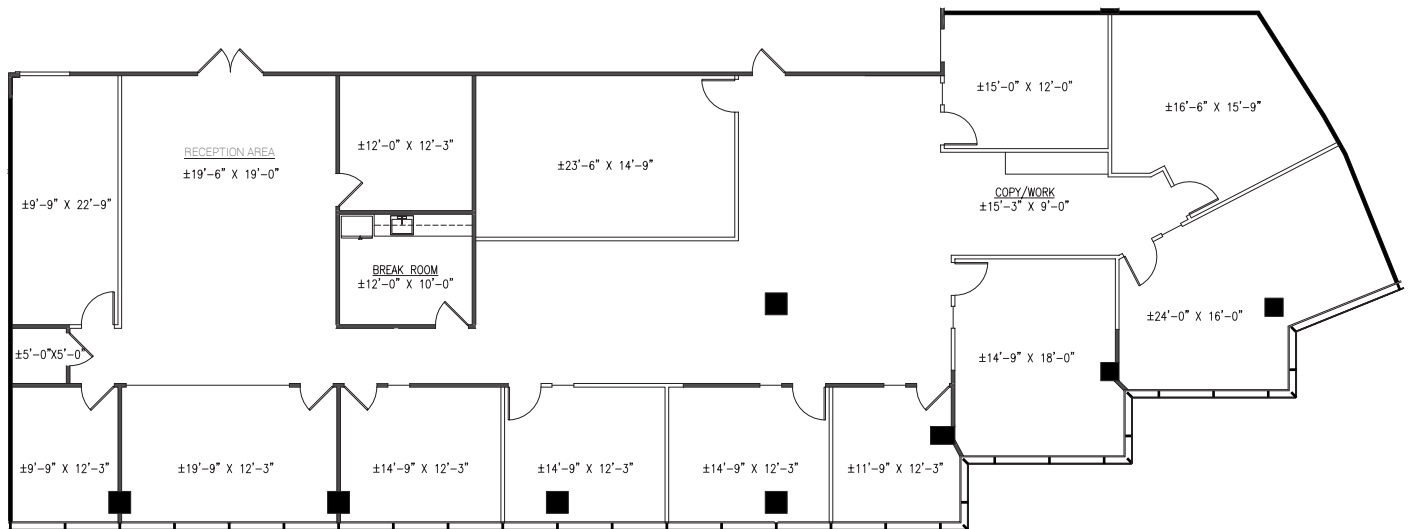
The information contained herein has been obtained from the property owner or other third party and is provided to you without verification as to accuracy. We (Lee & Associates, its brokers, employees, agents, principals, officers, directors and affiliates) make no warranty or representation regarding the information, property, or transaction. You and your attorneys, advisors and consultants should conduct your own investigation of the property and transaction.



# 4 HUTTON CENTRE

SOUTH COAST METRO

**SUITE 350 ±5,658 SF**



- 10 PRIVATE OFFICES
- CONFERENCE ROOM
- BREAK ROOM
- 2 FILE ROOMS
- OPEN AREA

**KURT BRUGGEMAN**  
Senior Vice President  
Lic #01264501  
949.790.3125  
kbruggeman@leeirvine.com

**MATT FRYER**  
Senior Vice President  
Lic #01333079  
949.790.3122  
mfryer@leeirvine.com

**DAVE SMITH**  
Senior Vice President  
Lic #01195186  
949.790.3134  
dsmith@leeirvine.com



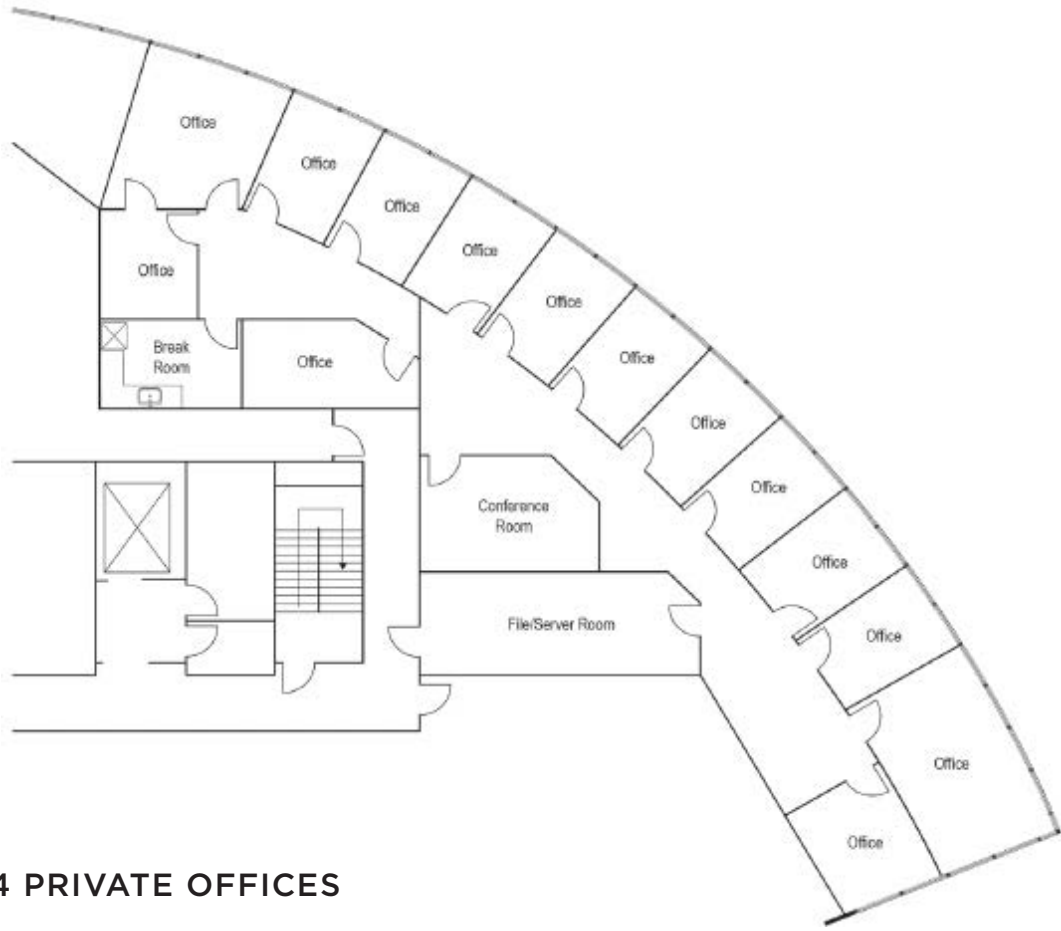


# 4

## HUTTON CENTRE

SOUTH COAST METRO

**SUITE 370 ±4,045 SF**



**14 PRIVATE OFFICES**

**LARGE CONFERENCE ROOM**

**FILE/SERVER ROOM**

**BREAK ROOM**

**KURT BRUGGEMAN**  
Senior Vice President  
Lic #01264501  
949.790.3125  
kbruggeman@leeirvine.com

**MATT FRYER**  
Senior Vice President  
Lic #01333079  
949.790.3122  
mfrayer@leeirvine.com

**DAVE SMITH**  
Senior Vice President  
Lic #01195186  
949.790.3134  
dsmith@leeirvine.com

**LEE & ASSOCIATES**  
COMMERCIAL REAL ESTATE SERVICES



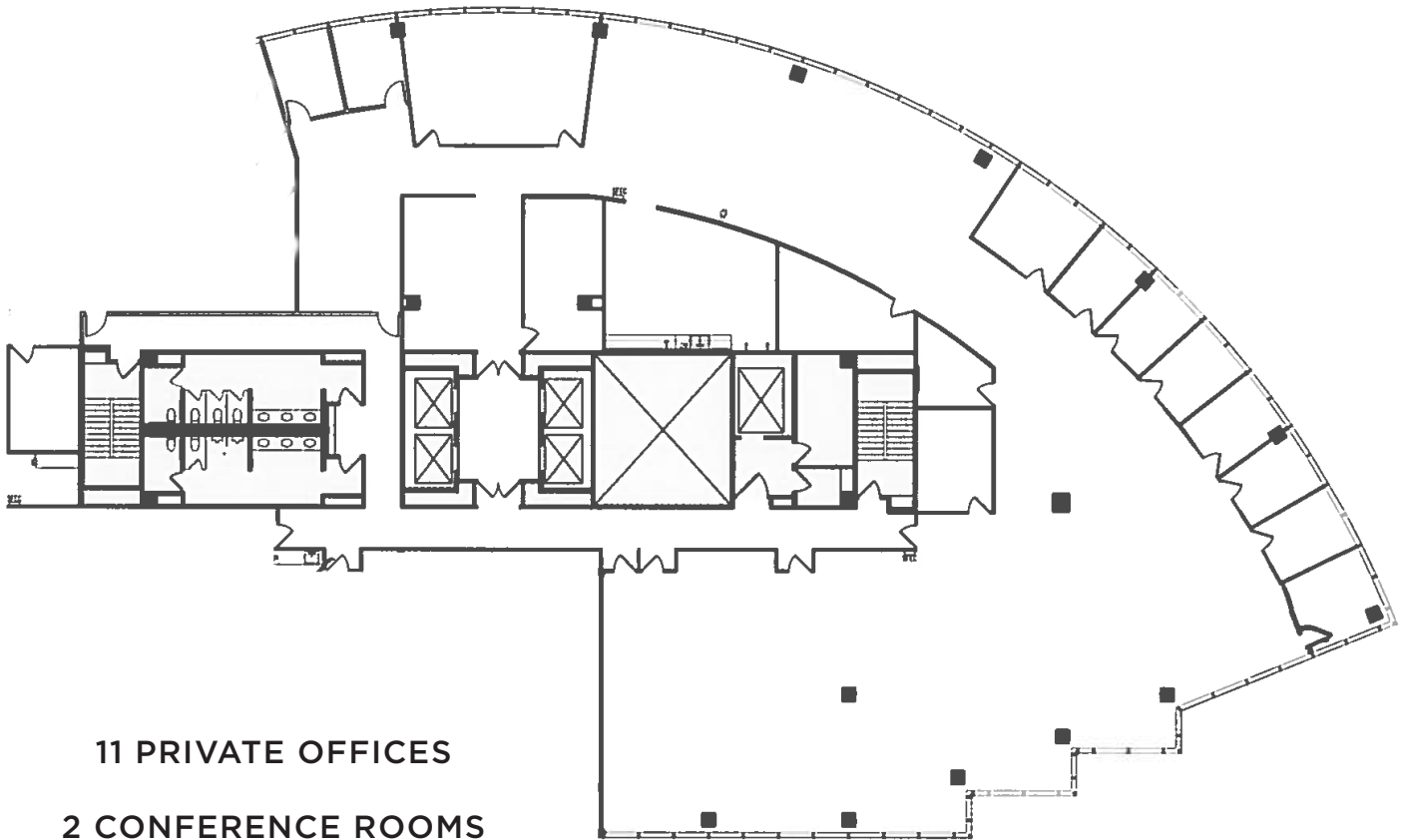


# 4

## HUTTON CENTRE

SOUTH COAST METRO

**SUITE 400 ±12,059 SF**



**11 PRIVATE OFFICES**

**2 CONFERENCE ROOMS**

**BREAK ROOM**

**PRODUCTION ROOM**

**SERVER/STORAGE ROOM**

**LARGE OPEN AREA**

**KURT BRUGGEMAN**

Senior Vice President  
Lic #01264501  
949.790.3125  
kbruggeman@leeirvine.com

**MATT FRYER**

Senior Vice President  
Lic #01333079  
949.790.3122  
mfryer@leeirvine.com

**DAVE SMITH**

Senior Vice President  
Lic #01195186  
949.790.3134  
dsmith@leeirvine.com



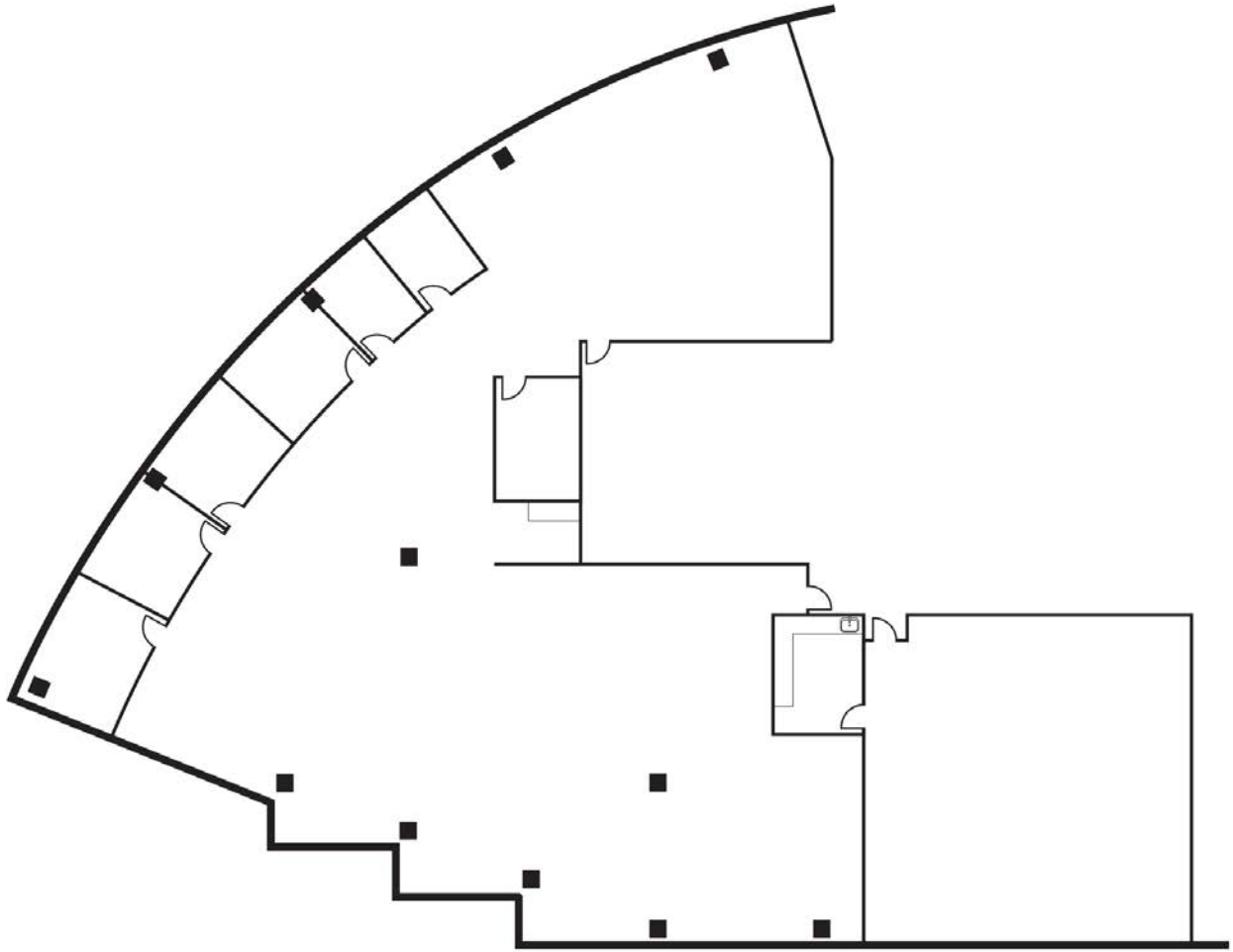


# 4

## HUTTON CENTRE

SOUTH COAST METRO

**SUITE 450 ±10,134 SF**



- 6 PRIVATE OFFICES
- CONFERENCE ROOM
- BREAK ROOM
- OPEN AREA

**KURT BRUGGEMAN**  
Senior Vice President  
Lic #01264501  
949.790.3125  
kbruggeman@leeirvine.com

**MATT FRYER**  
Senior Vice President  
Lic #01333079  
949.790.3122  
mfryer@leeirvine.com

**DAVE SMITH**  
Senior Vice President  
Lic #01195186  
949.790.3134  
dsmith@leeirvine.com



The information contained herein has been obtained from the property owner or other third party and is provided to you without verification as to accuracy. We (Lee & Associates, its brokers, employees, agents, principals, officers, directors and affiliates) make no warranty or representation regarding the information, property, or transaction. You and your attorneys, advisors and consultants should conduct your own investigation of the property and transaction.

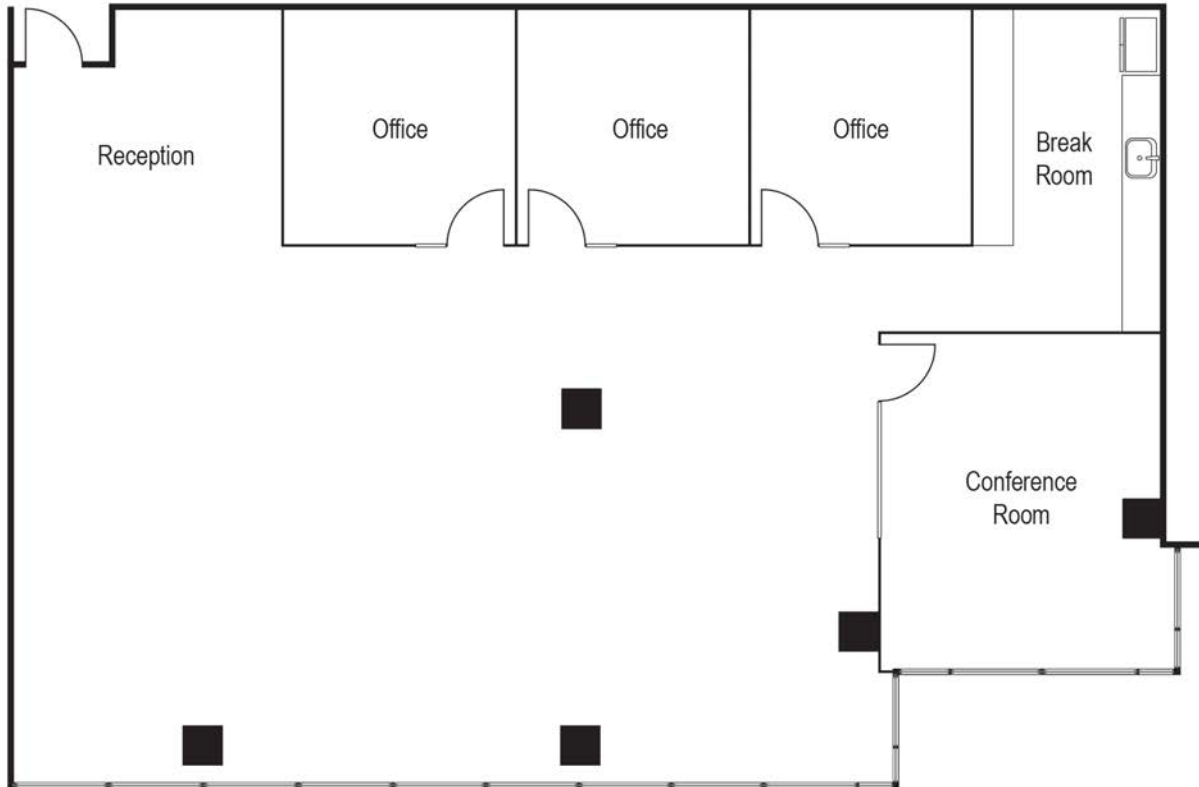


# 4

## HUTTON CENTRE

SOUTH COAST METRO

**SUITE 570 ±2,947 SF**



### CREATIVE SUITE

3 PRIVATE OFFICES

CONFERENCE ROOM

BREAK ROOM

OPEN AREA

**KURT BRUGGEMAN**  
Senior Vice President  
Lic #01264501  
949.790.3125  
kbruggeman@leeirvine.com

**MATT FRYER**  
Senior Vice President  
Lic #01333079  
949.790.3122  
mfryer@leeirvine.com

**DAVE SMITH**  
Senior Vice President  
Lic #01195186  
949.790.3134  
dsmith@leeirvine.com



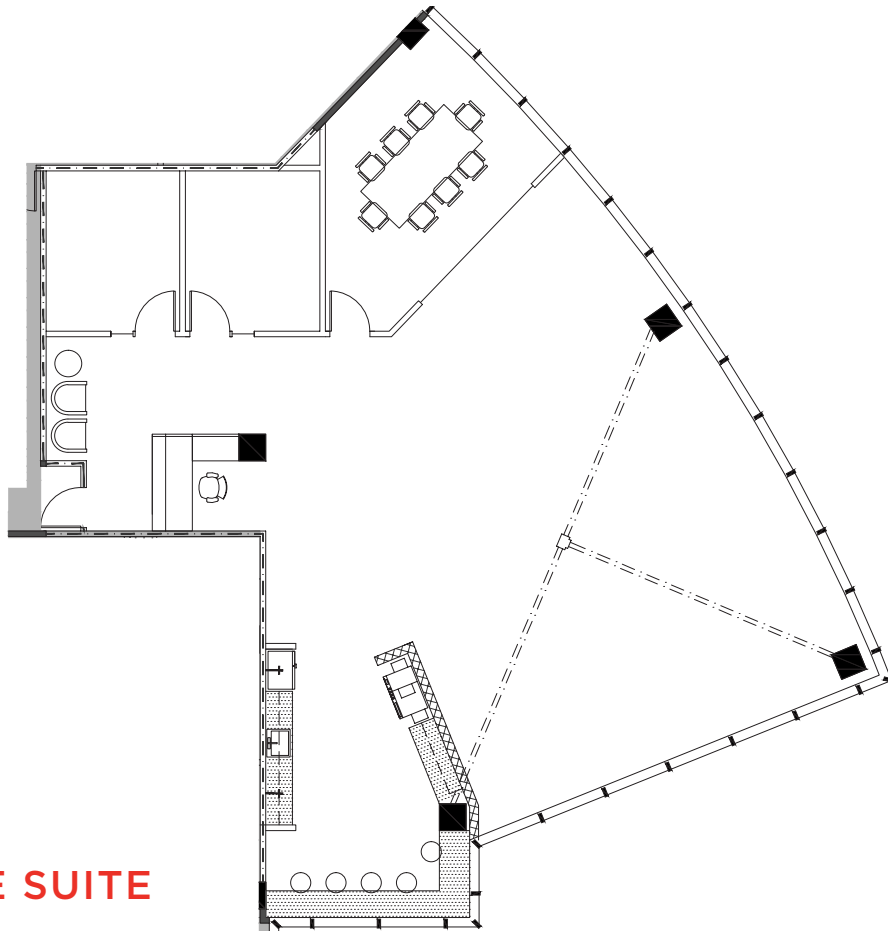


# 4

## HUTTON CENTRE

SOUTH COAST METRO

**SUITE 580 ±3,023 SF**



**CREATIVE SUITE**

**2 PRIVATE OFFICES**

**CONFERENCE ROOM**

**KITCHENETTE**

**OPEN AREA**

**KURT BRUGGEMAN**

Senior Vice President  
Lic #01264501  
949.790.3125  
kbruggeman@leeirvine.com

**MATT FRYER**

Senior Vice President  
Lic #01333079  
949.790.3122  
mfryer@leeirvine.com

**DAVE SMITH**

Senior Vice President  
Lic #01195186  
949.790.3134  
dsmith@leeirvine.com

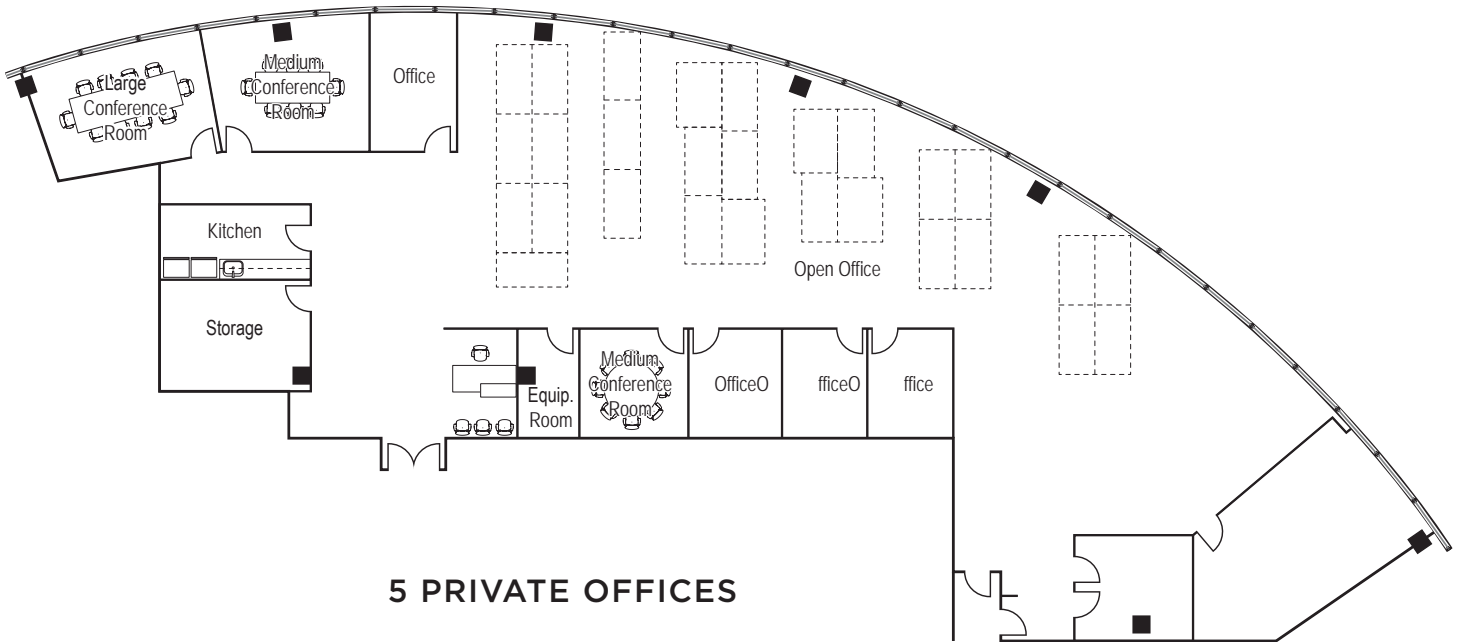




# 4 HUTTON CENTRE

SOUTH COAST METRO

**SUITE 600 ±7,220 SF**



- 5 PRIVATE OFFICES**
- 2 CONFERENCE ROOMS**
- 2 STORAGE ROOMS**
- WORKROOM**
- KITCHEN**

**KURT BRUGGEMAN**  
Senior Vice President  
Lic #01264501  
949.790.3125  
kbruggeman@leeirvine.com

**MATT FRYER**  
Senior Vice President  
Lic #01333079  
949.790.3122  
mfrayer@leeirvine.com

**DAVE SMITH**  
Senior Vice President  
Lic #01195186  
949.790.3134  
dsmith@leeirvine.com



The information contained herein has been obtained from the property owner or other third party and is provided to you without verification as to accuracy. We (Lee & Associates, its brokers, employees, agents, principals, officers, directors and affiliates) make no warranty or representation regarding the information, property, or transaction. You and your attorneys, advisors and consultants should conduct your own investigation of the property and transaction.

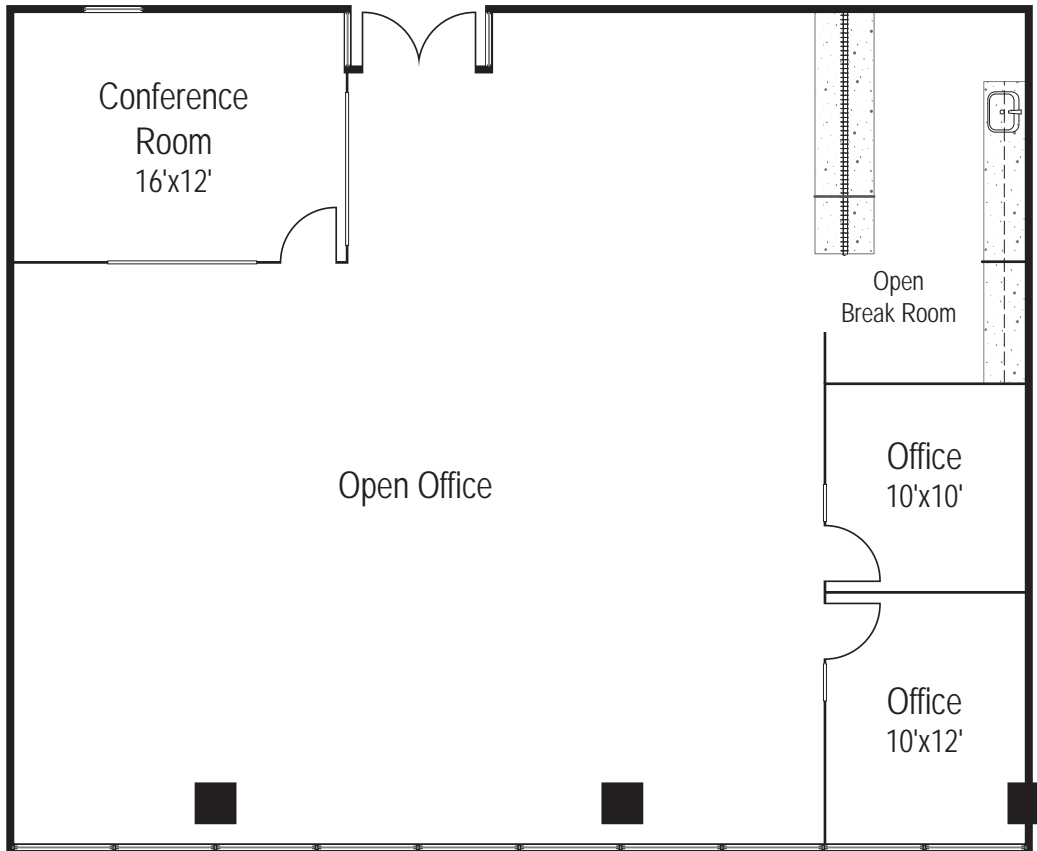


# 4

## HUTTON CENTRE

SOUTH COAST METRO

**SUITE 610 ±2,570 SF**



### CREATIVE SUITE

2 PRIVATE OFFICES

CONFERENCE ROOM

OPEN AREA

KITCHEN

**KURT BRUGGEMAN**  
Senior Vice President  
Lic #01264501  
949.790.3125  
kbruggeman@leeirvine.com

**MATT FRYER**  
Senior Vice President  
Lic #01333079  
949.790.3122  
mfryer@leeirvine.com

**DAVE SMITH**  
Senior Vice President  
Lic #01195186  
949.790.3134  
dsmith@leeirvine.com



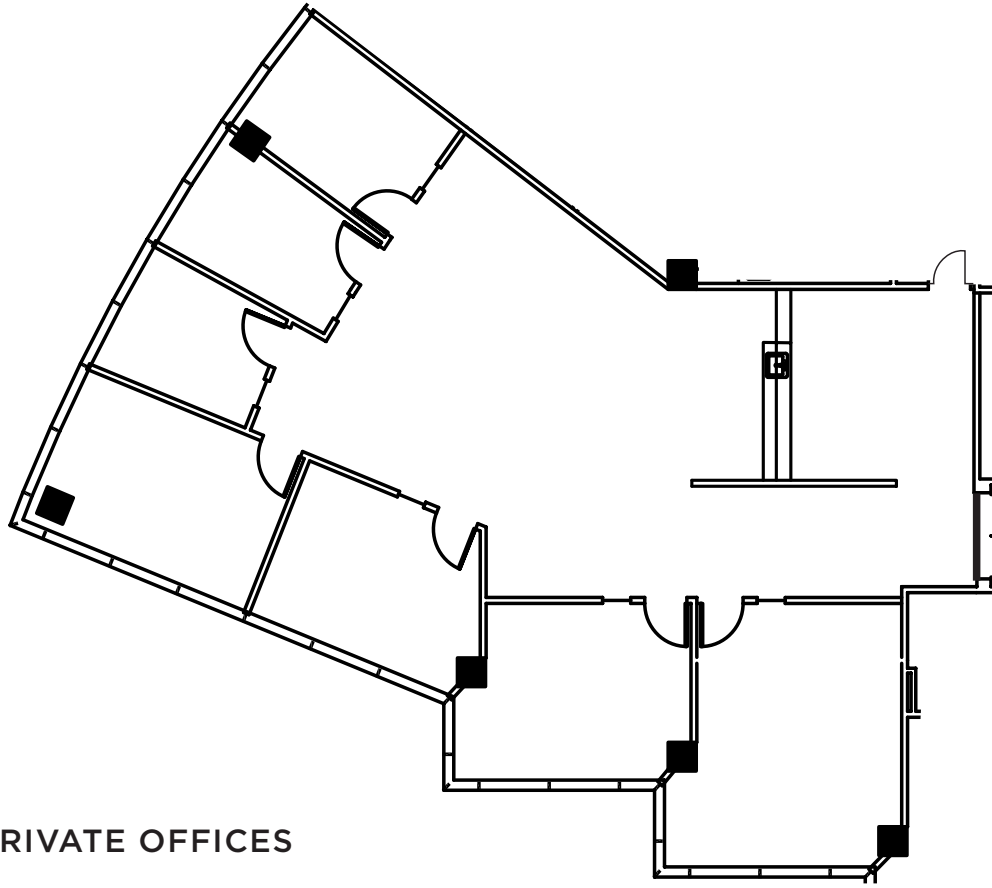


# 4

## HUTTON CENTRE

SOUTH COAST METRO

**SUITE 670 ±2,992 SF**



- 6 PRIVATE OFFICES
- CONFERENCE ROOM
- OPEN BREAK AREA
- OPEN AREA

**KURT BRUGGEMAN**  
Senior Vice President  
Lic #01264501  
949.790.3125  
kbruggeman@leeirvine.com

**MATT FRYER**  
Senior Vice President  
Lic #01333079  
949.790.3122  
mfryer@leeirvine.com

**DAVE SMITH**  
Senior Vice President  
Lic #01195186  
949.790.3134  
dsmith@leeirvine.com



The information contained herein has been obtained from the property owner or other third party and is provided to you without verification as to accuracy. We (Lee & Associates, its brokers, employees, agents, principals, officers, directors and affiliates) make no warranty or representation regarding the information, property, or transaction. You and your attorneys, advisors and consultants should conduct your own investigation of the property and transaction.

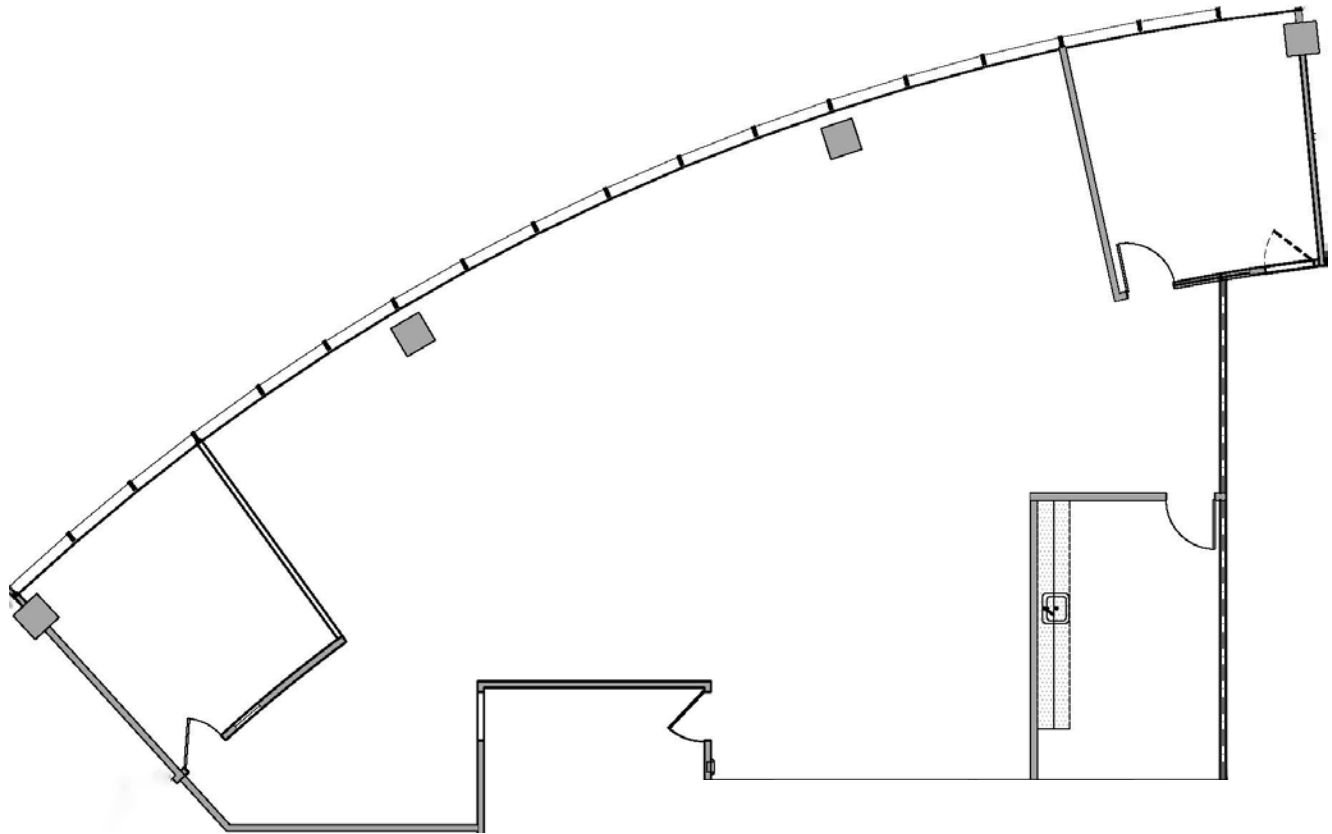


# 4

## HUTTON CENTRE

SOUTH COAST METRO

**SUITE 720 ±3,064 SF**



**1 PRIVATE OFFICE**  
**CONFERENCE ROOM**  
**OPEN AREA**  
**BREAK ROOM**

**KURT BRUGGEMAN**  
Senior Vice President  
Lic #01264501  
949.790.3125  
kbruggeman@leeirvine.com

**MATT FRYER**  
Senior Vice President  
Lic #01333079  
949.790.3122  
mfryer@leeirvine.com

**DAVE SMITH**  
Senior Vice President  
Lic #01195186  
949.790.3134  
dsmith@leeirvine.com

**LEE & ASSOCIATES**  
COMMERCIAL REAL ESTATE SERVICES



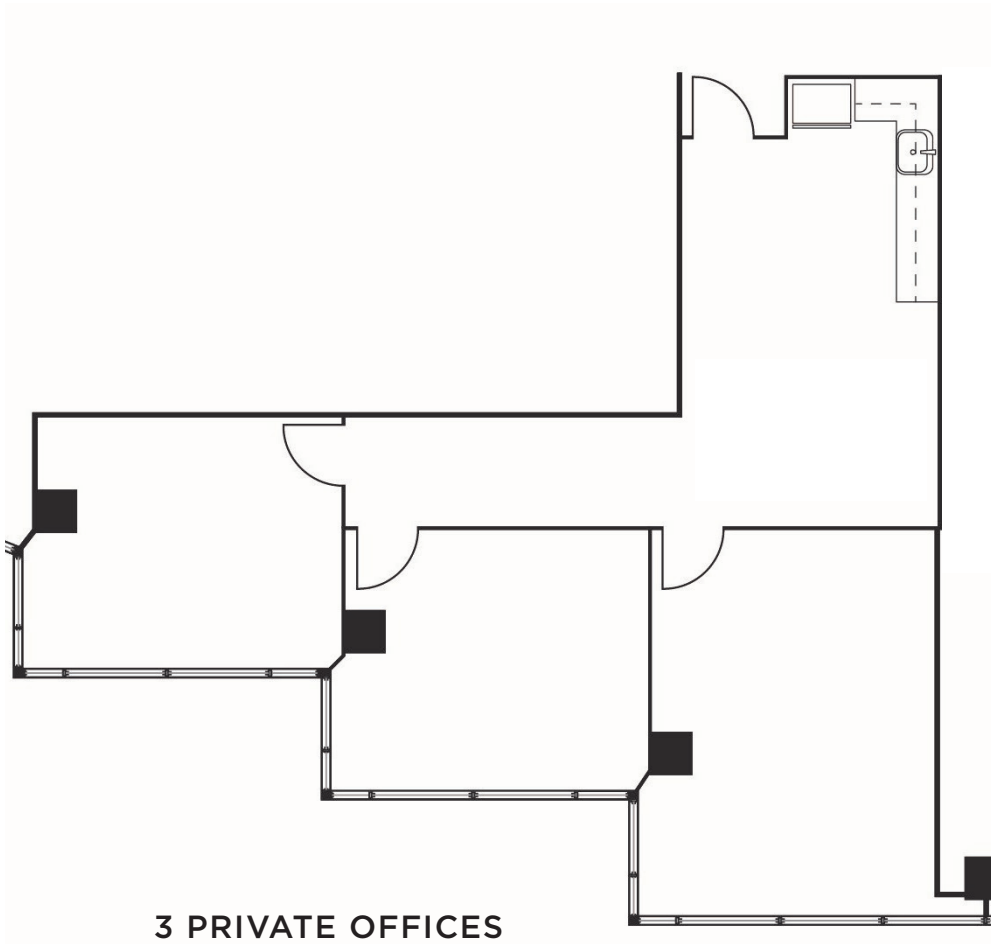


# 4

## HUTTON CENTRE

SOUTH COAST METRO

**SUITE 740 ±1,276 SF**



**3 PRIVATE OFFICES**

**KITCHENETTE**

**KURT BRUGGEMAN**  
Senior Vice President  
Lic #01264501  
949.790.3125  
kbruggeman@leeirvine.com

**MATT FRYER**  
Senior Vice President  
Lic #01333079  
949.790.3122  
mfryer@leeirvine.com

**DAVE SMITH**  
Senior Vice President  
Lic #01195186  
949.790.3134  
dsmith@leeirvine.com



The information contained herein has been obtained from the property owner or other third party and is provided to you without verification as to accuracy. We (Lee & Associates, its brokers, employees, agents, principals, officers, directors and affiliates) make no warranty or representation regarding the information, property, or transaction. You and your attorneys, advisors and consultants should conduct your own investigation of the property and transaction.

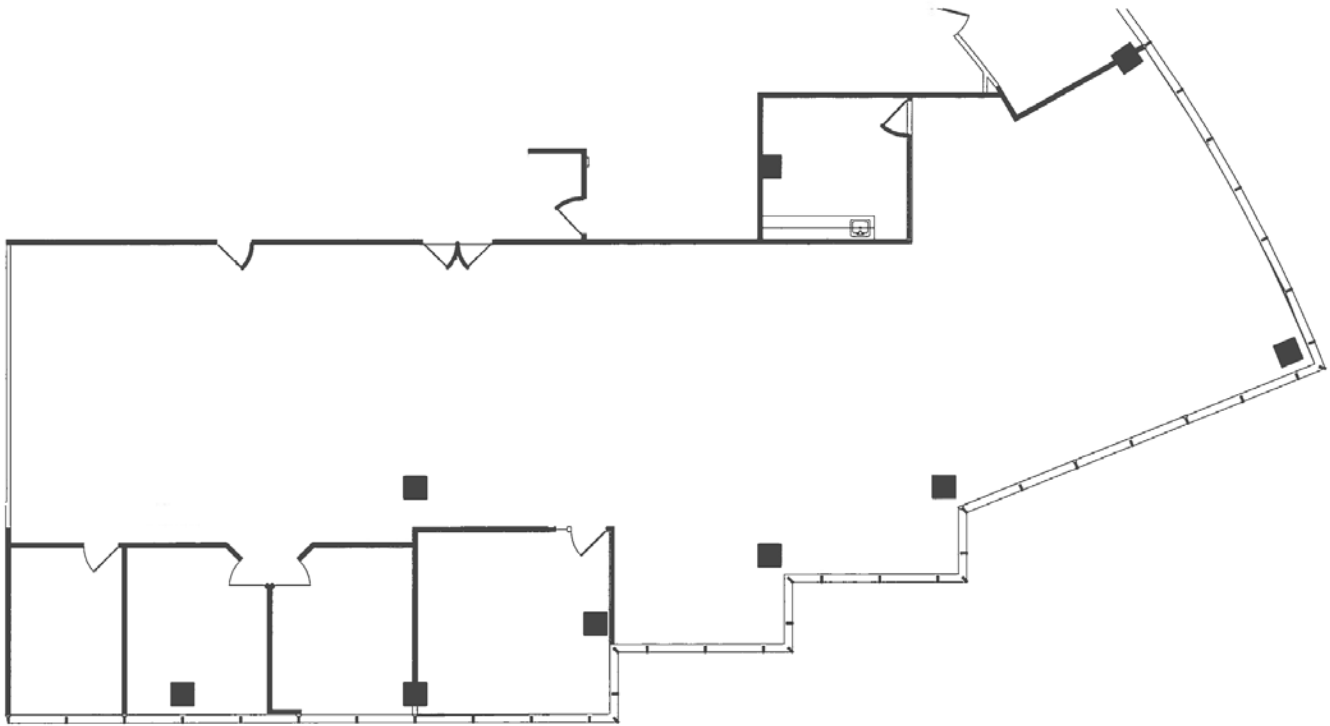


# 4

## HUTTON CENTRE

SOUTH COAST METRO

**SUITE 760 ±5,012 SF**



**6 PRIVATE OFFICES**  
**CONFERENCE ROOM**  
**BREAK ROOM**  
**OPEN AREA**

**KURT BRUGGEMAN**  
Senior Vice President  
Lic #01264501  
949.790.3125  
kbruggeman@leeirvine.com

**MATT FRYER**  
Senior Vice President  
Lic #01333079  
949.790.3122  
mfryer@leeirvine.com

**DAVE SMITH**  
Senior Vice President  
Lic #01195186  
949.790.3134  
dsmith@leeirvine.com

**LEE & ASSOCIATES**  
COMMERCIAL REAL ESTATE SERVICES

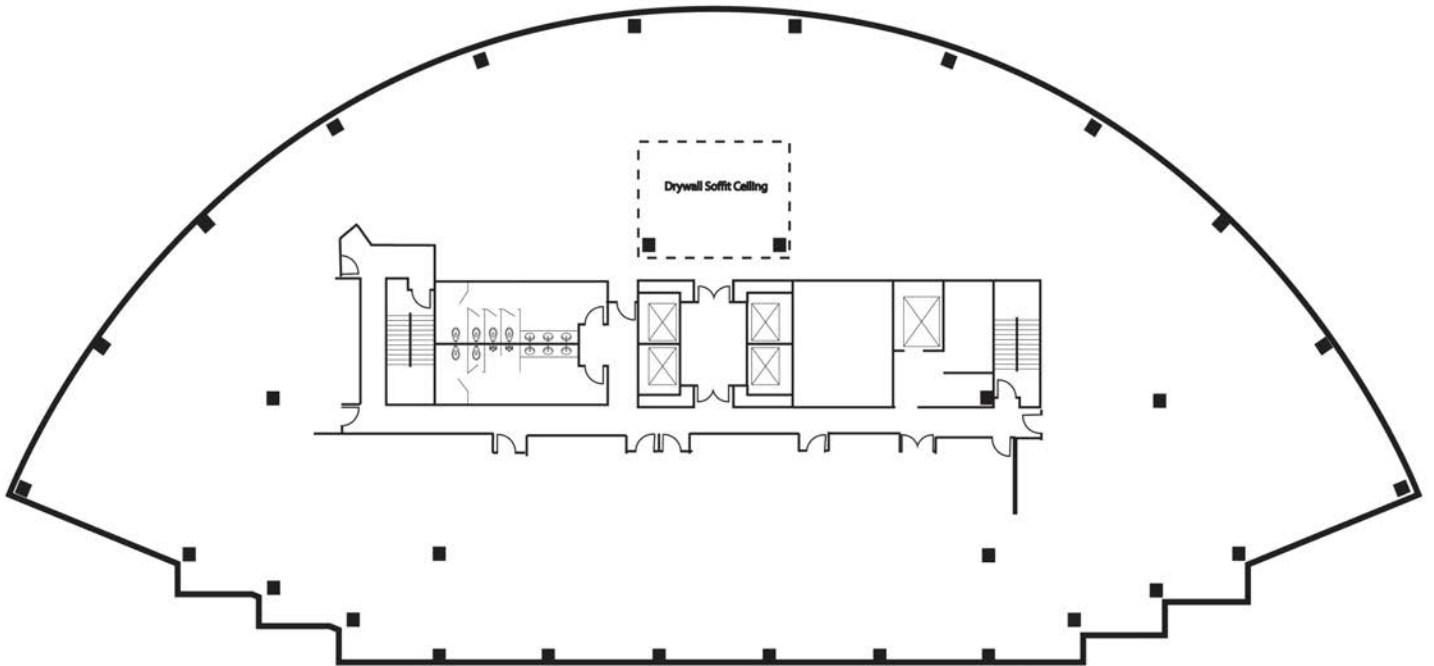


# 4

## HUTTON CENTRE

SOUTH COAST METRO

**SUITE 800 ±22,353 SF**



**WARM SHELL**

**KURT BRUGGEMAN**

Senior Vice President  
Lic #01264501  
949.790.3125  
kbruggeman@leeirvine.com

**MATT FRYER**

Senior Vice President  
Lic #01333079  
949.790.3122  
mfryer@leeirvine.com

**DAVE SMITH**

Senior Vice President  
Lic #01195186  
949.790.3134  
dsmith@leeirvine.com

